

Regenerative Power Sources



High Power: AZX Series

- 30 kW to 550kW
- 30, 45, 55 kW, parallel up to 550 kW

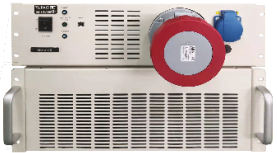
Mid to High Power: AGX Series

- 6 kW to 21 kW per 4U Parallel up to 252 kW
- Voltage: 0-350 VAC L-N 1 ϕ / 0-606 VAC L-L 3 ϕ ; -500 Vdc to +500 Vdc
- 15 – 1200 Hz; Extended Option -1 – 3000 Hz

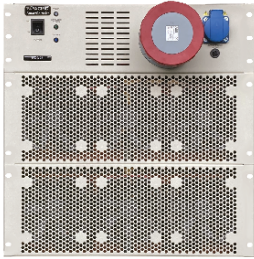
- Voltage: 0-240 Vac L-N / 0-415 Vac L-L 0-480 Vac-LN / 0-830 Vac-LL; 0-340 Vdc and 0-680 Vdc
- 15-1000Hz; Extended Option 1 – 10,000Hz

LFZ - Flicker Impedance Module

Available in 16 A, 40 A and 75 A versions



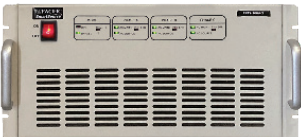
LFZ-1-40 / LFZ-3-40



LFZ-3-75

EPTS - Three Phase Electronic Power Transfer Switch Module

Available in 16 A, 32 A, 75 A and 100 A versions



Full EMC Compliance Testing of Specific Immunity IEC Standards.

The EPTS Option allows to perform full- compliance testing of products to the following IEC standards:

Immunity

- IEC 61000-4-11 AC Voltage Dips, Interruptions and Variations to 16 A / phase
- IEC 61000-4-27 Three Phase Voltage Unbalance to 16 A / phase
- IEC 61000-4-34 AC Voltage Dips, Interruptions and Variations to 75 A / phase
- IEC 61000-4-29 DC Voltage Dips, Interruptions and Variations

Industry Leading AC & DC Power Test Solutions

Innovate the way you test.

Founded in 1971, Pacific Power Source (PPS) is an industry leading manufacturer of AC and DC power test solutions. Our reputation as a market and technology leader stems from our best-in-class products, commitment to R&D investments, and exceptional worldwide customer support.

Our Products

- AC Power Sources
- AC & DC Power Sources
- Regenerative Grid Simulators
- AC & DC Electronic Loads
- EMC Compliance Test Systems
- Test Software



Our Solutions

High quality AC & DC test equipment for the following branches and application fields:

- Aerospace
- EV & EV Charging
- Renewable Energies
- Military and Defense
- Data Centers & Network Servers
- Power Design and Validation
- Research and Academia
- EMC Compliance Testing

The PPS Advantage

- High Performance & Reliability
- Best-in-Class User Experience
- Versatility & Future-Proofing
- Customized System Solutions
- Fast Lead Times
- Application Expertise
- Excellent Customer Service
- ISO 17025 Accredited Calibration



Pacific Power Source, Inc.
2802 Kelvin Avenue, Suite 100 Irvine, CA 92614 USA
sales@pacificpower.com

Pacific Power Source Europe GmbH
Binzigstraße 21
77846 Kappelrodeck Germany
sales@pacificpower.eu



PacificPower.com

Subject to change without notice
vers. 03/2025
©Pacific Power Source GmbH



With Easy-to-Use Software with Pre-Programmed Test Sequences



INNOVATE THE WAY YOU TEST

Regenerative EMC Compliance Test Solutions

Testing to IEC 61000 Standards - Harmonics, Flicker Emissions and Power Line Immunity with ISO 17025 Calibration

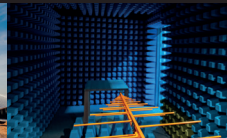
EV, Charging



Renewable Energy



EMC Testing



Appliances, Medical



Industrial



Aerospace



PacificPower.com

EMC Compliance Test Systems for Power Line Emissions

Advanced solutions for IEC compliance in power line emissions testing. Our ECTS2 series offers turn-key systems for testing power line emissions and immunity, utilizing programmable AC and AC+DC power sources. These systems help ensure compliance with **IEC 61000-3** standards for power line emissions.

We also offer **specialized EMC Test Software** to control Power Sources and ECTS2 systems, simplifying emissions testing and generating compliance reports for certification.

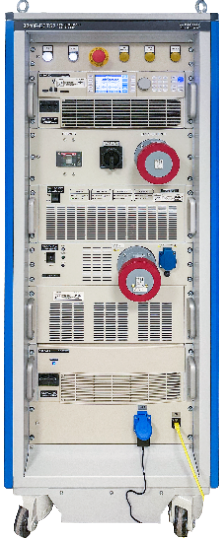
HARMONICS EMISSIONS IEC 61000-3-2 / -12

FLICKER EMISSIONS IEC 61000-3-3 / -11

ECTS2 Series - IEC Harmonics and Flicker Test Systems for EMC Compliance Testing



75 A - Testsystem with 55 kVA Regenerative AC-Source (AZX Series)



40 A - Testsystem with 30 kVA AC-Source (AFX or AGX Series)

Power Line Immunity Test Solutions

Systems for IEC compliance in **power line immunity testing**, using programmable AC and AC+DC power sources. Our solutions meet **IEC 61000-4-nn standards** and include **EMC Immunity Test Software** for controlling systems and generating compliance reports. Full compliance with regards to rise and fall time is met with our EPTS Option.



IEC 61000-4-11
AC Voltage Dips <16 A



IEC 61000-4-13
Harm & Interharmonics



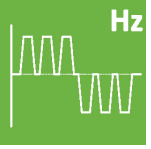
IEC 61000-4-14
AC Voltage Fluctuations



IEC 61000-4-17
DC Ripple



IEC 61000-4-27
3 Phase Unbalance



IEC 61000-4-28
Frequency Variations



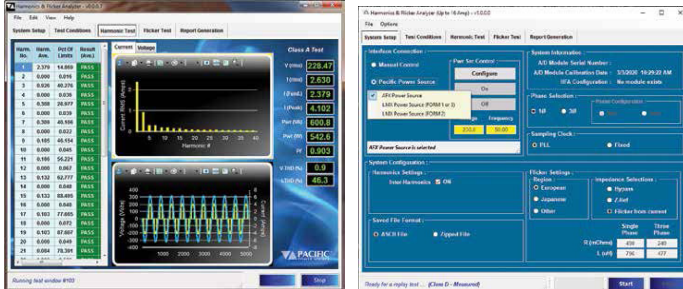
IEC 61000-4-29
DC Voltage Dips



IEC 61000-4-34
AC Voltage Dips >16 A

IEC Standard	Supported Version	Edt.
IEC 61000-3-2	IEC 61000-3-2:2018+AMD1:2020 CSV	5.1
IEC 61000-3-3	IEC 61000-3-3:2013/AMD2:2021	3.2
IEC 61000-3-11	IEC 61000-3-11:2017 RLV	2.0
IEC 61000-3-12	IEC 61000-3-12:2011	2.1

Easy-to-use Test Software



Harmonics Display showing use of color to highlight information

System Setup selects AC Source, Flicker Impedance as needed

IEC Standard	Supported Version	Edt.
IEC61000-4-11 *	IEC 61000-4-11:2020 RLV	3.0
IEC61000-4-13	IEC 61000-4-13:2002+AMD1:2009+A MD2:2015 CSV	1.2
IEC61000-4-14	IEC 61000-4-14:1999+AMD1:2001+A MD2:2009 CSV	1.2
IEC61000-4-17	IEC 61000-4-17:1999+AMD1:2001+A MD2:2008 CSV	1.2
IEC61000-4-27*	IEC 61000-4-27:2000+AMD1:2009 CSV	1.1
IEC61000-4-28	IEC 61000-4-28:1999+AMD1:2001+A MD2:2009 CSV	1.2
IEC61000-4-29*	IEC 61000-4-29:2000	1.0
IEC61000-4-34 *	IEC 61000-4-34:2005+AMD1:2009 CSV	1.1

* For full compliance with generator Rise and Fall times, the EPTS Option is required.