



## SmartSource Suite

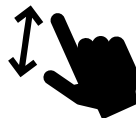
Breakthrough WebServer for Enhanced Control, Test Creation & Reporting



**NO INSTALL OR  
DRIVERS REQUIRED**



**ACCESS ON ANY  
MOBILE DEVICE,  
ETHERNET, OR USB**



**SIMPLIFY CONTROL  
& PROGRAMMING**



**INCREASE  
PRODUCTIVITY**



**REDUCE  
TEST TIME**

# SmartSource Suite Remote Control Platform

## Breakthrough WebServer for Enhanced Control, Test Creation & Reporting

The SmartSource suite is an embedded web server that allows you to fully access and control Pacific Power Source products on any web browser, in real-time with an enhanced user experience and visualization tools.

Its intuitive user-interface, full access to all test functions, and easy programming capabilities substantially reduce test time and increase productivity.



### INNOVATE THE WAY YOU TEST



**NO INSTALL OR DRIVERS REQUIRED**



**ACCESS ON ANY MOBILE DEVICE, ETHERNET, OR USB**



**SIMPLIFY CONTROL & PROGRAMMING**



**INCREASE PRODUCTIVITY**



**REDUCE TEST TIME**

## Simplify & Accelerate Test with Smart Control

Easily access the SmartSource Suite on any web browser (e.g. laptop, tablet, phone, etc.) via user's secure ethernet access or standard USB interface. Enter the power source's IP address and instantly gain full control of your Pacific Power Source unit.

### 1 Enhanced Visualization and Control

- Say goodbye to windows and driver installations.
- See quickly if your test is on track with integrated measurement tools.
- Don't fuss over forward and back buttons; get more screen real estate for data insights.
- Access real-time control, measurements, program and reporting tools locally or remotely.

### 2 Intuitive Test Creation & Execution

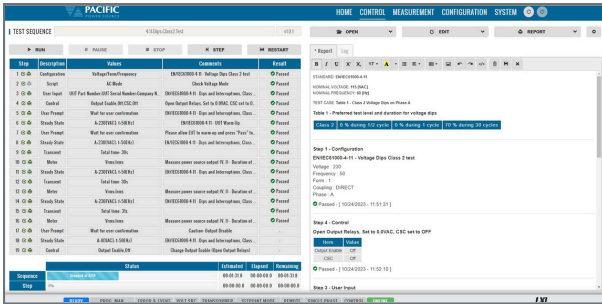
- Select from 200 customizable waveforms.
- Easily enter parameters and quickly generate new waveforms with advanced editor.
- Expand views and execute using multiple windows.
- Reduce risks of operator error with user prompts at every step.

### 3 Pre-Written Test Standard Sequences

- Save development time for power, immunity, emissions, and compliance testing.
- Customize and run test sequences or single step through one test condition at a time.
- No intimate IEC standards knowledge required.
- Streamline compliance documentation with extensive reporting capabilities.

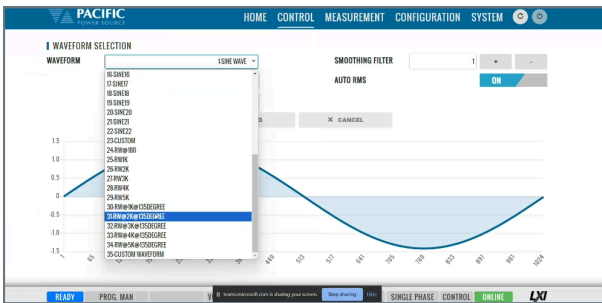
### 4 Usability Without Limits

- Full access to all testing functions quickly and comfortably.
- Optimize use of extensive and accurate built-in web browser functions.
- Use the integrated scope and harmonic analyzer to get instant measurement feedback.
- Trigger on events at the right point in time.
- Get enhanced visibility of setups and measurement data.



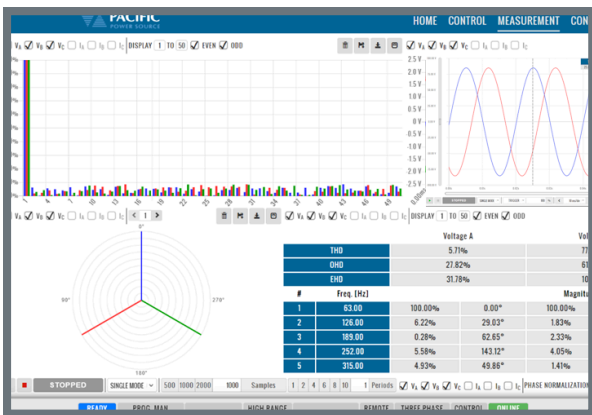
## Easily & Comfortably Run Tests in Real-Time

Select operating modes, phase configurations, and test parameters all from your web browser.



## Select from 200 Programs in Waveform Library

Run, modify, or create new waveforms with accuracy.



## Advanced Spectrum Measurement Screens

View instant measurement results offered in many visualization format options.



## Home

- Access system information
- Send SCPI commands or command scripts using Interactive command-line
- Quick search instantly pulls up commands from user manual; copy and paste to create your own test programs



## Control

- Execute, pause, stop & abort tests
- Select from 200 programs in Waveform Library with preview mode
- Create, edit & save test sequences & test parameters
- Transient data and execution screen using spreadsheet layout
- Set up tests & view results on multiple windows



## Measure

- Easily view Harmonics & Inter-harmonics
- Digital scope provides advanced measurements without external equipment
- Datalogger records time-stamped measurements, steps & executed sequences
- Export detailed reports in multiple formats



## Configure

- Full access to Smart Power Protection
- Set user limits & presets on protection mode!
- Select operation modes & configure channels
- Set voltage ramp & slew rates with precision



## System

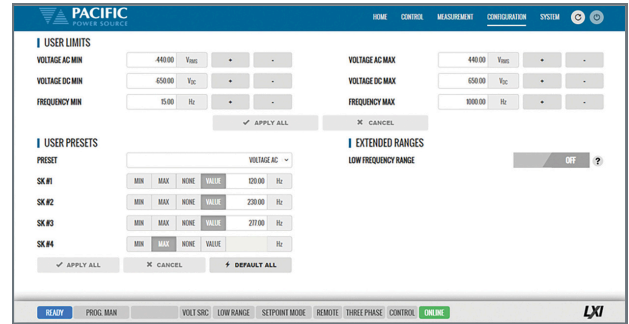
- Access to analog & digital I/O interfaces
- View Error, Event & Fault Lists
- Import/export set-up & measurement files
- Self-calibrate, update firmware
- Sanitize & reboot
- Access memory storage
- Set up user permissions & remote access

## Usability without Limits: We Call this Smart Power



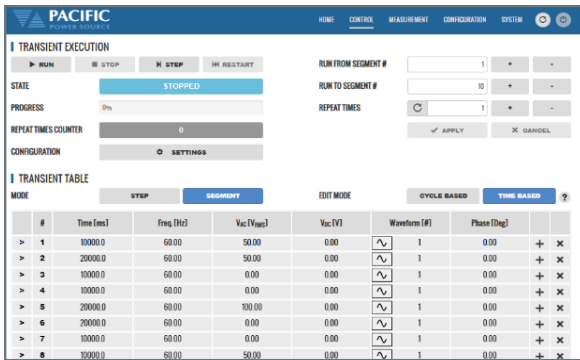
### Precise Harmonics & Interharmonics

More precise amplitude accuracy compared to arbitrary waveforms with precision regulation loop.



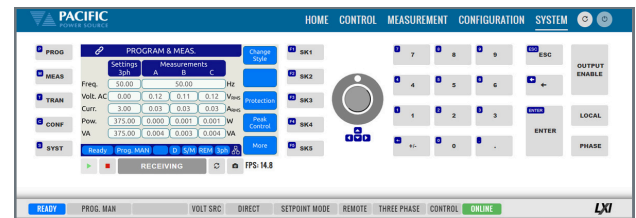
### Smart Power Protection Limits

Minimize operator error by setting upper and/or lower parameter range limits.



### Transient Executions – LIST, STEP, PULSE

Program new or stored transients in simple table entry format.



### Remote Interface Virtual Front Panel

Multiple control options provide ease of use with access to virtual panel shuttle knob and entry keys.

## Pre-Written Test Standard Sequence Options

Compliance Test Sequences	Aerospace & Defense Test Sequences
<ul style="list-style-type: none"> <li>IEC Test Suite: IEC 61000-4-11p, IEC 61000-4-14, IEC 61000-4-17, IEC 61000-4-27p, IEC 61000-4-28, IEC 61000-4-29p and IEC 61000-4-34p</li> <li>IEC 61000-4-13 (Option C)</li> <li>IEEE 1547.1-2020</li> <li>Semi-F47-0706</li> <li>KS C 9610-4-11, KS C 9610-4-29</li> </ul>	<ul style="list-style-type: none"> <li>ABD0100.1.8 - Airbus A380, AC &amp; DC Power Groups</li> <li>ABD0100.1.8.1 - Airbus A350, AC &amp; DC Power Groups</li> <li>AMD24C - Airbus A400M, AC &amp; DC Power Groups</li> <li>Boeing 787B3-0147 - B787, AC &amp; DC Power Groups</li> <li>RTCA-DO160 Section 16, AC &amp; DC Power Groups</li> <li>MIL-STD704 - US DoD, AC &amp; DC Power Groups</li> <li>MIL-STD 1399-300B &amp; -300-1 - US</li> <li>DoD, Shipboard Power, AC Power Groups</li> </ul>