

PPSC Manager Software

Graphical User Interface

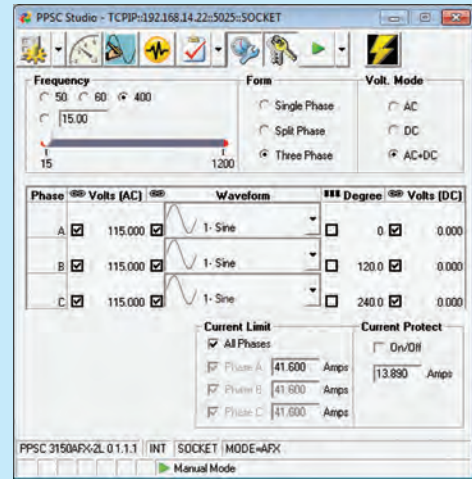


Function	Phase A	Phase B	Phase C
V(A)CL-N	115.000	115.000	115.000
V(A)CL-L	199.069	199.421	199.069
V(DC)	0.300	0.300	0.300
V(ACDC)	115.000	115.000	115.000
I(rms)	19.167	19.167	19.167
I(peak)	27.106	27.106	27.106
I(crest)	1.414	1.414	1.414
KW	2.204	2.204	2.204
KVA	2.204	2.204	2.204
PF	1.000	1.000	1.000

Step	Description	Value	Comment	Result
1	Control	Output Enable, CSC, Transition Time	Open Output Relay, CSC set to Off, Trans...	
2	User Input	UUT Part Number, UUT Serial Number, Co...		
3	User Prompt	Connect UUT to the DC Power Source...	Connect UUT to power source	
4	Meter	V(DC)I(rms), K/W, V(rms)(-N)	Test Period Data log 5 seconds	
5	Steady State	V=0 D/Vac: V=28 D/Vdc: F=1200.0	Steady State Voltage Cond A AC	
6	Meter	V(DC)I(rms), K/W, V(rms)(-N)	Test Period Data log 5 seconds	
7	User Prompt	Perform the following steps prior to pressi...	UUT Warm Up	
8	Meter	V(DC)I(rms), K/W, V(rms)(-N)	Test Period Data log - 30 mins	
9	Steady State	V=0 S/Vac: V=28 D/Vdc: F=1200.0	LDC401 - Test Condition A - AC = 0.9Vrms	
10	Meter	V(DC)I(rms), K/W, V(rms)(-N)	Test Period Data log - 30 mins	
11	Steady State	V=0 D/Vac: V=28 D/Vdc: F=1200.0	Remove Ripple	
12	Meter	V(DC)I(rms), K/W, V(rms)(-N)	Test Period Data log 5 seconds	
13	Steady State	V=0 D/Vac: V=28 D/Vdc: F=1200.0	Load Ripple B Waveform	
14	Meter	V(DC)I(rms), K/W, V(rms)(-N)	Test Period Data log 5 seconds	
15	Steady State	V=1 S/Vac: V=28 D/Vdc: F=1200.0	LDC401 - Test Condition B - AC = 0.8Vrms	
16	Meter	V(DC)I(rms), K/W, V(rms)(-N)	Test Period Data log - 30 mins	
17	Steady State	V=0 D/Vac: V=28 D/Vdc: F=1200.0	Steady State Voltage	
18	User Prompt	Perform the following steps prior to pressi...	UUT Final Performance Test	
19	User Prompt	UUT has met Conditions, then click...	Click on Output Disable	

Take Control of your AFX Series Power Source

Programming - PPSC Studio

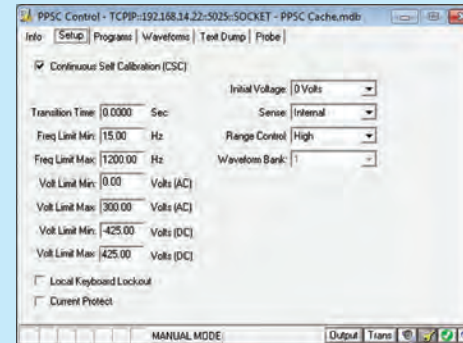


Metering

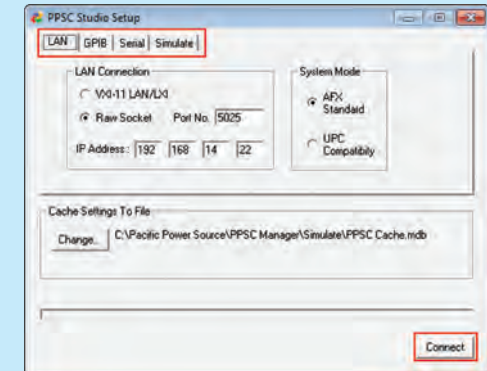
Function	Phase A	Phase B	Phase C
V(AC)L-N	114.9997	114.9984	115.0009
V(AC)L-L	199.1842	199.1852	199.1864
V(DC)	-0.0004	0.0016	-0.0007
V(ACDC)	114.9997	114.9984	115.0009
Irms	24.1312	24.0639	24.0424
Ipeak	34.3212	34.1942	34.1677
Icrest	1.4142	1.4143	1.4143
KW	2775.0010	2767.0012	2764.0007
KVA	2775.0151	2767.2074	2764.0049
PF	1.0000	0.9997	1.0000
Frequency	400.0000	400.0000	400.0000
Degrees	0	120.0	240.0

Extensive AC and DC measurements on all output phases.

Source Control - PPSC Control



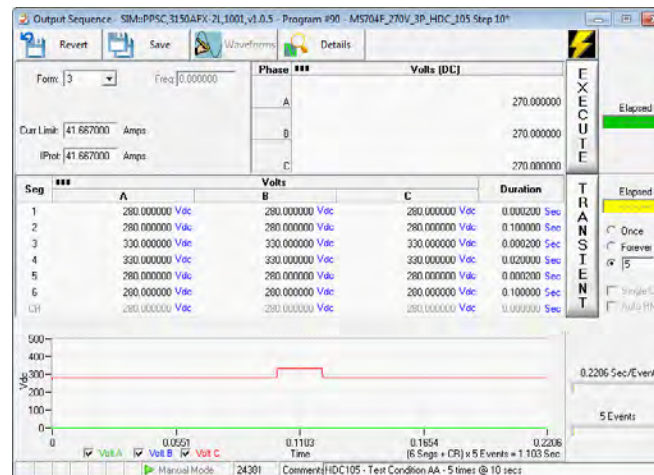
Interface Selections



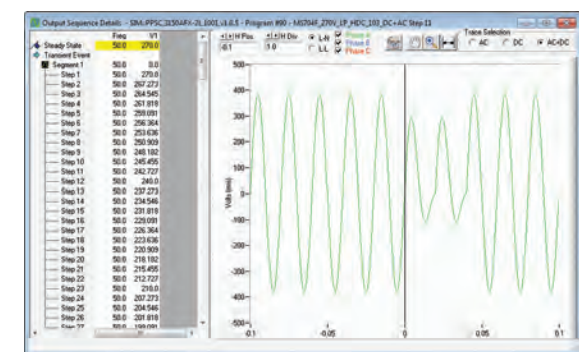
PPSC Test Manager Option



Develop elaborate AC or DC test sequences using the PPSC Test Manager option or select from our extensive library of compliance test sequences for Avionics, Military or Commercial products.



Test sequence steps provide detailed amplitude and timing control over all outputs in single, split, or three phase mode of operation as needed.



Unique graphical transient pre-view mode allows detailed preview and checking of transient timing before execution.