



LOCATING AFX SERIES UNIT SERIAL NUMBER

Abstract

There are several situations where a user may have to determine what the serial number of the AFX power source is. Specific examples are:

- To register software option licenses that is tied to the power source serial number.
- To report a service related issue where customer service is asking for the serial number so they can retrieve the sales order and test data records.

This application note highlights the various places where the AFX Serial number can be found. There are three locations where this information is available and two methods to obtain it over a remote control connection:

1. Main Model Type and Serial number tag located on the unit's chassis.
2. Small Model/Serial tag located on the rear panel.
3. On front panel LCD screen in SYSTEM, UNIT INFO screen.
4. On the built in web server main page available through LAN connection

5. By sending *IDN? command over any of the remote control interface from PPSC Manager's command line interface or National Instruments MAX utility command line.

Details for each alternative location are provided on subsequent pages.

1. Main Model/Serial Tag Location

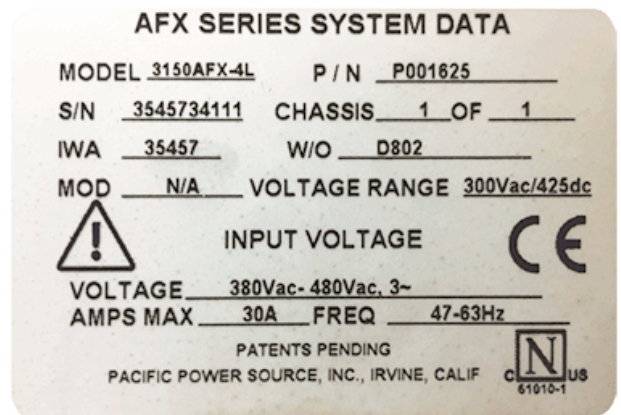
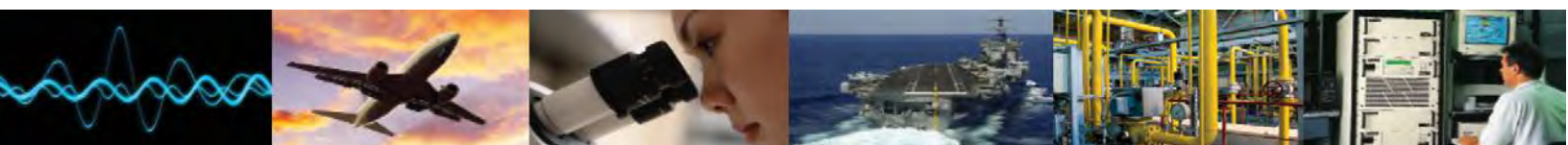


Figure 1: AC or DC Input OEM Power Converter

The main Model and Serial Tag is affixed to the right hand side of the unit's chassis when facing the front of the unit. Unless the unit is mounted in a 19" cabinet or the side of the unit is otherwise obstructed, the serial number is shown on line 2 on the left. See image above.



2. Rear Panel Serial Tag

A redundant small label containing just the MODEL and SERIAL number is located on the rear panel of the unit. This label is typically visible on 19" rack mounted unit when looking from the back of the cabinet.

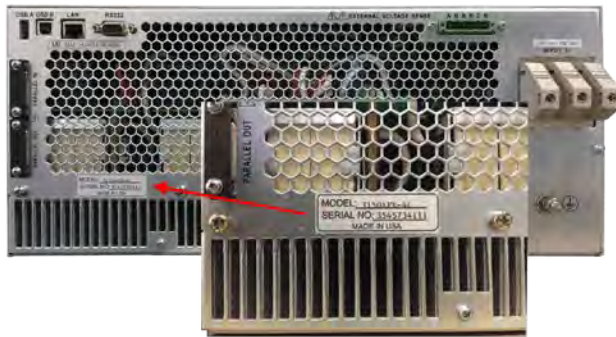


Figure 2: Location of Rear Panel Serial Tag

3. Front Panel Display

The unit serial number is also shown in the UTIL, SYSTEM INFO screen of the AFX power source. To access this screen, press the SYST soft key on the left of the LCD, scroll to the "Unit Info" entry and press Enter to display the Unit Information screen.

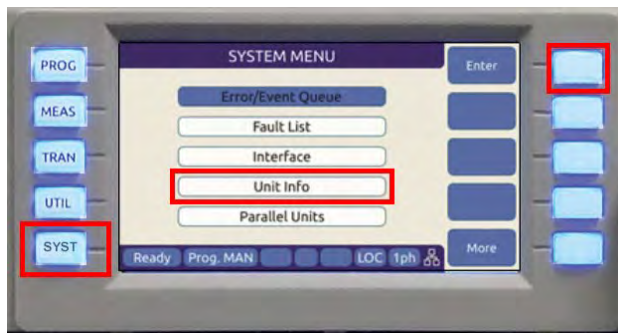


Figure 3: SYSTEM MENU access to Unit Info

The Serial Number is shown toward the bottom of the screen.

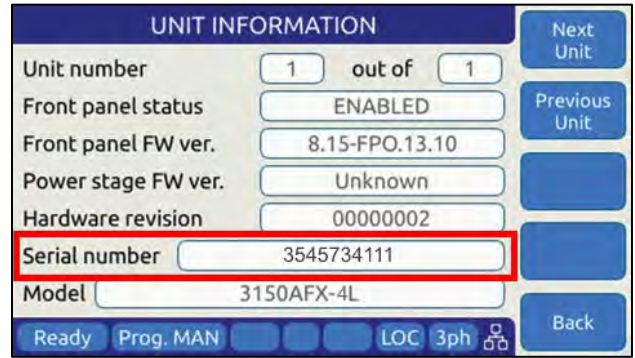


Figure 4: UNIT INFORMATION Screen

4. Web Interface

The built-in LXI web server Home page also contains the serial number of the power source. If the unit is connected to a local area network, enter the IP address of the power source a browser address bar. This will display the Home page. The serial number is listed in the left column as shown below.

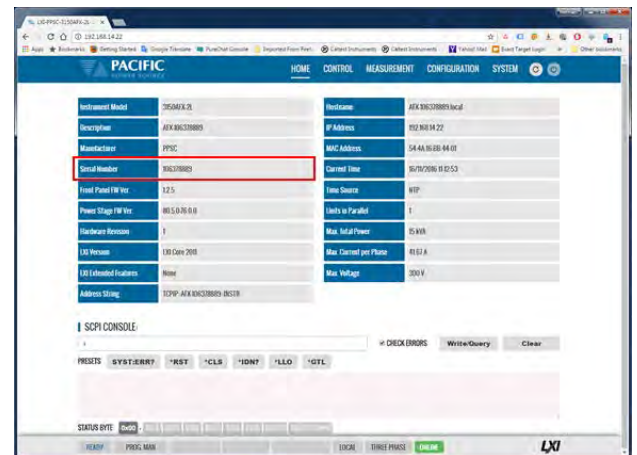


Figure 5: S/N displayed on Web Server Home page

5. Command Line Interface

If a computer is used to control the power source, the serial number can be queried using a command line interface to send the *IDN? query command. This command will return the make, model and serial number of the power source.

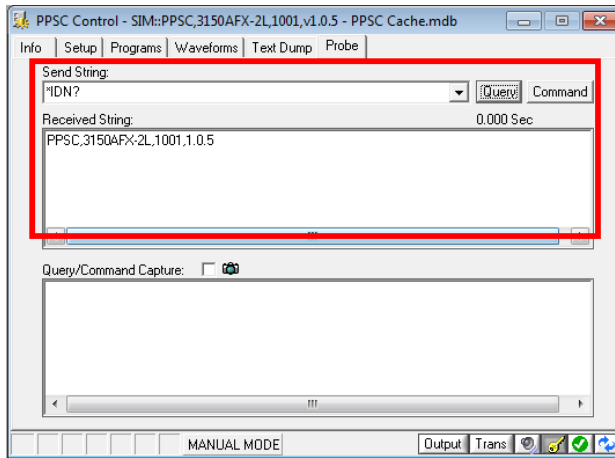


Figure 6: PPSC Manager Command Line Interface

Software Registration

Once the firmware serial number information is recorded, Pacific Power Source can issue a Registration Code that will enable communication between UPC Studio and your AC Power Source.

In order to receive the registration code, use one of the following methods:

1. Go to www.pacificpower.com and select PPSC Manager Software under the Products pull down or click the link below
<http://pacificpower.com/products/ppsc-studio-software/>

Click the "Request Registration Code for your copy of PPSC Manager today". Fill in the required information and submit the on-line form. A Registration Code will automatically be returned via email.

Request Registration Code for your copy of PPSC Manager today

2. Email Pacific Power Source with your AFX serial number and product info,
support@pacificpower.com
3. Call Pacific Power Source at +1-949-251-1800, M-F, 8:00AM to 4:30PM PST

Entering your Registration Code

Once you have received your registration code, it is entered in the dialog box shown below.

If the operator attempts to use PPSC Manager to communicate with the Power Source prior to registering the software, a dialog box is presented requesting the registration code. Otherwise, enter the registration code in the dialog box that appears under the Help/Register menu of PPSC Manager.

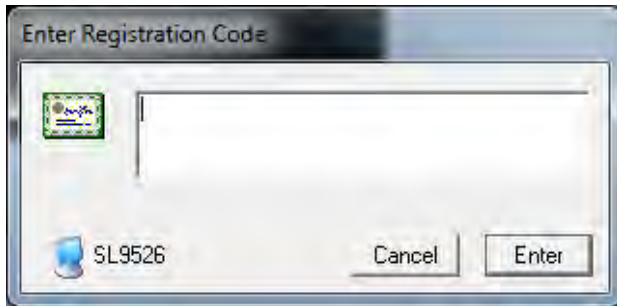


Figure 7: Registration Code Dialog

Customer Support

For application support, contact Pacific Power Source's Customers Service - Toll Free US: +1 (800) 854-2433 / support@pacificpower.com or your local authorized Pacific Power Source distributor.



17692 Fitch, Irvine, CA 92614 USA
Phone: +1 949.251.1800
Fax: +1 949.756.0756
Toll Free: 800.854.2433
E-mail: sales@pacificpower.com
www.pacificpower.com